



# CARVER™



## OWNER'S MANUAL

**Read and understand this entire manual before riding!  
For assistance contact Razor. DO NOT RETURN TO STORE.**

**HANDLEBARS DO NOT TURN. Shift body weight side to side to maneuver scooter.**

Item Numbers:  
**13010200**  
**13010212**

# CONTENTS

|                       |   |                   |     |
|-----------------------|---|-------------------|-----|
| Safety Warnings ..... | 1 | Carvr Parts ..... | 3-4 |
| Before You Begin..... | 2 | Warranty .....    | 5   |
| Set-Up and Usage..... | 2 |                   |     |

# SAFETY WARNINGS

**⚠ WARNING:** Riding the Carvr can be a hazardous activity. Certain conditions may cause the equipment to fail without fault of the manufacturer. Like other wheeled products, the Carvr can and is intended to move, and it is therefore possible to lose control, fall off and/or get into dangerous situations that no amount of care, instruction or expertise can eliminate. If such things occur, your child can be seriously injured or die, even when using safety equipment and other precautions. USE COMMON SENSE.

This manual contains many warnings and cautions concerning the consequences of failing to maintain, inspect or properly use your Carvr. Because any incident can result in serious injury or even death, we do not repeat the warning of potential serious injury or death each time such a possibility is mentioned.

## APPROPRIATE RIDER USE AND PARENTAL SUPERVISION

Direct adult supervision is required at all times. This manual contains important safety information. It is your responsibility to review this information and make sure that all children obey all warnings, cautions, instructions and safety topics and assure that young riders are able to safely use this product. Razor recommends that you periodically review and reinforce the information in this manual with young riders, and that you inspect and maintain your children's vehicle to insure their safety.

The recommended rider age of 5 years and older for Carvr is only an estimate, and can be affected by the rider's size, weight or ability. Any child unable to fit comfortably on the Carvr should not attempt to ride it.

A parent's decision to allow his or her child to ride this product should be based on the child's maturity, skill and ability.

DO NOT EXCEED THE WEIGHT LIMIT OF 143 pounds (65kg).

Rider weight does not necessarily mean a child's size is appropriate to fit or maintain control of the Carvr.

Refer to the section on safety for additional warnings.

## ACCEPTABLE RIDING PRACTICES AND CONDITIONS

Direct parental supervision is required. The Carvr is meant to be used only in controlled environments free of potential traffic hazards and not on public streets. Do not allow your child to ride the Carvr in any areas where vehicle traffic is present. Child must maintain a hold on the handlebars at all times. Never allow more than one child at a time to ride the Carvr. Never use near steps, sloped driveways, hills, roadways, alleys or swimming pool areas. Keep fingers and other body parts away from the product when folding or unfolding. Adults must not allow children to assist in folding or unfolding the scooter.

Do not ride the Carvr in wet weather. The Carvr is intended for use on solid, flat, clean and dry surfaces such as pavement or level ground without loose debris such as rocks or gravel. Wet, slick or uneven and rough surfaces may impair traction and contribute to possible accidents. Do not ride the Carvr in mud, ice, puddles or water. Avoid excessive speeds that can be associated with downhill rides. Never risk damaging surfaces such as carpet or flooring by use of a Carvr indoors. Do not ride at night or when visibility is impaired.

## PROPER RIDING ATTIRE

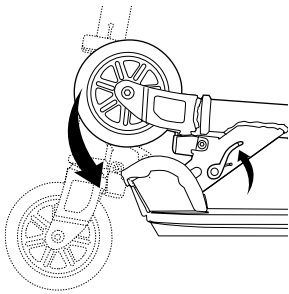
Always ensure child is wearing proper protective equipment such as an approved safety helmet. A helmet may be legally required by local law or regulation in your area. A child should always wear shoes, never ride barefooted or in sandals, and keep shoelaces tied and out of the way of the wheels.

FAILURE TO USE COMMON SENSE AND HEED THE ABOVE WARNINGS INCREASES RISK OF SERIOUS INJURY. USE WITH APPROPRIATE CAUTION AND SERIOUS ATTENTION TO SAFE OPERATION.

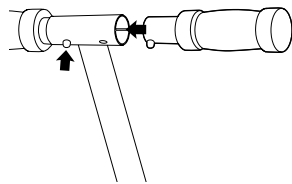
## BEFORE YOU BEGIN

Remove contents from box. Remove the foam separators that protect the components from damage during shipping. Inspect the contents of the box for scratches in the paint, dents that may have occurred during shipping. Because the Carvr was assembled and packed at the factory, there should not be any problems, even if the box has a few scars or dents.

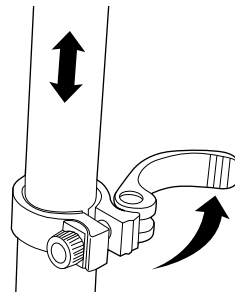
## SET-UP AND USAGE



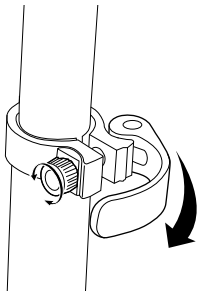
**1** Pull up on the folding release lever to rotate the front fork into the upright position.



**2** Insert handlebars into T-tube until you hear the button click into the hole. To release the handlebar, press in button and pull out.



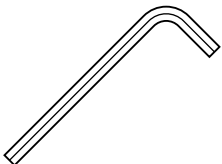
**3** To adjust the height of the handlebar, release the up clamp and pull up on the T-tube.



**4** Once you have reached the desired height, close the up clamp.

**Note:** You may need to adjust the thumb screw to ensure the clamp is tight.

### □ Required Tools (not included)



5mm  
hexagonal key wrenches  
(not included)

**⚠ WARNING: DO NOT USE NON-RAZOR PRODUCTS WITH YOUR CARVR.**

The Carvr has been built to certain Razor design specifications. The original equipment supplied at the time of sale was selected on the basis of its compatibility with the frame, fork and all other parts. Certain aftermarket products may or may not be compatible.

**Need Help?** Visit our web site for replacement parts, product support, live chat and a list of authorized service centers at [www.razor.com](http://www.razor.com) or call toll-free at 866-467-2967 Monday - Friday 8:00 AM - 5:00 PM Pacific Time.

# CARVR PARTS

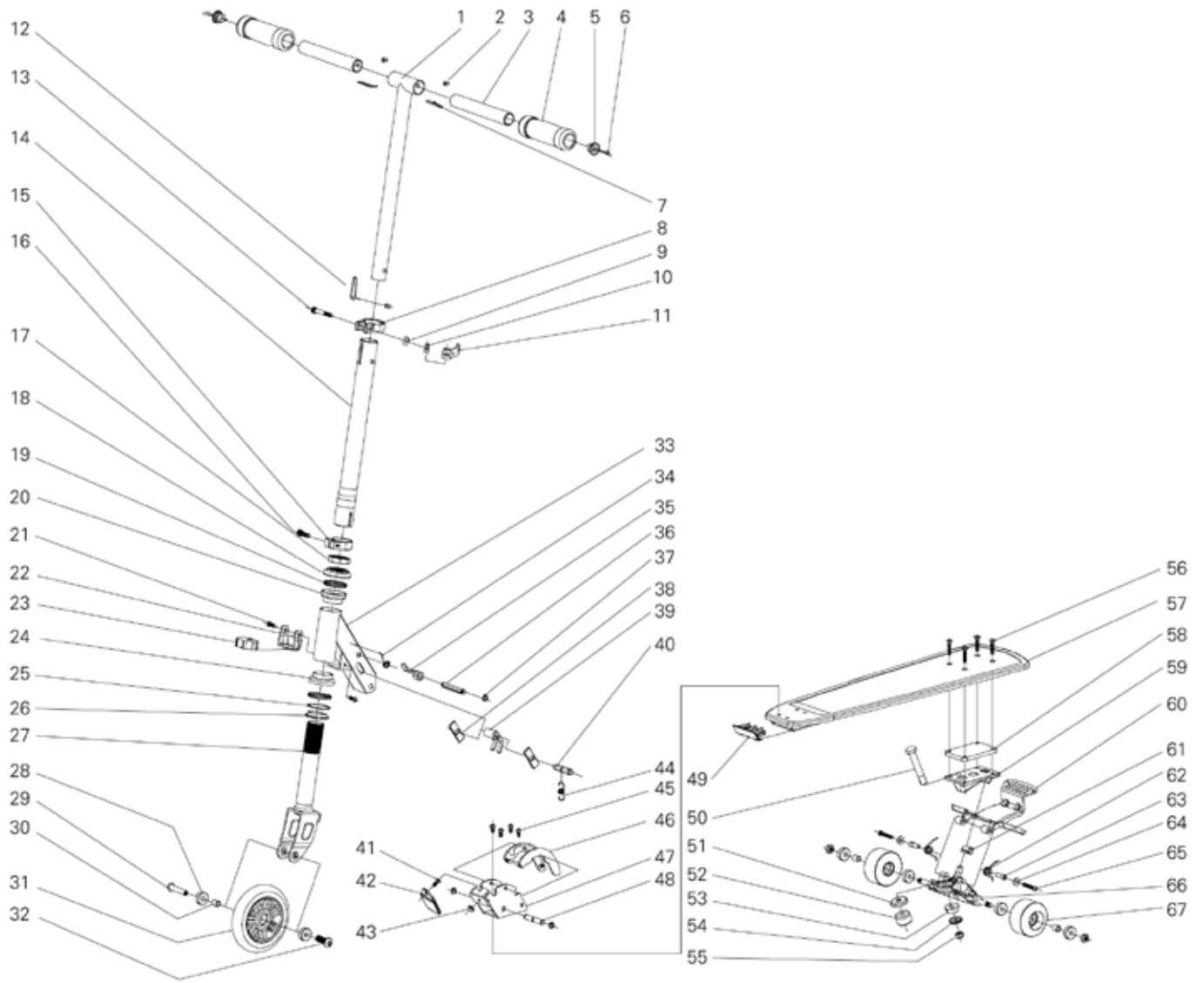
Keep your Carvr running for years with genuine Razor parts. Visit our web site to purchase replacement parts.  
(Specifications subject to change without notice.)

|                    |                              |                          |                   |
|--------------------|------------------------------|--------------------------|-------------------|
| 1 T-tube           | 19 Bearing ball              | 37 C-ring                | 55 Nylon Nut      |
| 2 Button           | 20 Up cup                    | 38 Folding protector     | 56 Hex head screw |
| 3 Handlebar        | 21 Screw                     | 39 Handle hook           | 57 Frame part     |
| 4 Grip             | 22 Steering limitation block | 40 Lever                 | 58 Truck pad      |
| 5 End Cap          | 23 Rubber                    | 41 Hex head screw M6 X12 | 59 Truck base     |
| 6 Cord             | 24 Down cup                  | 42 Folding protector     | 60 Rear brake     |
| 7 Spring           | 25 Water proof ring          | 43 Nut                   | 61 Brake stopper  |
| 8 Up clamp         | 26 Cap                       | 44 Spring                | 62 Brake spring   |
| 9 Washer           | 27 Fork                      | 45 Hex head screw M6 X16 | 63 Brake busing   |
| 10 Mount           | 28 608ZZ bearing             | 46 Folding protector     | 64 Washer         |
| 11 Up clamp lever  | 29 Nut                       | 47 Folding part          | 65 Screw          |
| 12 Spring          | 30 Spacer                    | 48 Lever                 | 66 Truck          |
| 13 Screw           | 31 5" Wheel                  | 49 Front deck cover      | 67 2.5" PU wheel  |
| 14 Steering tube   | 32 Screw                     | 50 Screw                 |                   |
| 15 Down clamp      | 33 Square tube               | 51 Washer                |                   |
| 16 Screw           | 34 Elastomer                 | 52 Suspension            |                   |
| 17 Lock nut        | 35 Handlebar                 | 53 Suspension            |                   |
| 18 Lock nut washer | 36 Lever                     | 54 Washer                |                   |

---

**Need Help?** Visit our web site for replacement parts, product support, live chat and a list of authorized service centers at [www.razor.com](http://www.razor.com) or call toll-free at 866-467-2967 Monday - Friday 8:00 AM - 5:00 PM Pacific Time.

# CARVR PARTS



## SAFETY REMINDERS

### PRE-RIDE CHECKLIST



#### Loose Parts

Check and secure all fasteners before every ride. Make sure the steering bolts and wheels are tight. There should not be any unusual rattles or sounds from loose parts or broken components. If you are not sure, ask an experienced mechanic to check.



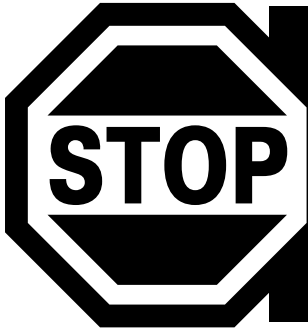
#### Frame, Fork and Handlebars

Check for cracks or broken connections. Although broken frames are rare, it is possible for an aggressive driver to bash into a curb or wall and wreck and bend or break a frame. Get in the habit of inspecting yours regularly.



#### Safety Gear

Always wear proper protective equipment such as an approved safety helmet, elbow pads and kneepads. Always wear shoes (lace-up shoes with rubber soles), never ride barefooted or in sandals, and keep shoelaces tied and out of the way of the wheels.



**DO NOT RETURN TO STORE**  
Failure to follow these instructions may damage your vehicle and void your warranty.

## WARRANTY

### Razor Limited Warranty

The manufacturer warrants this product to be free of manufacturing defects for a period of 6 months from date of purchase. This Limited Warranty does not cover normal wear and tear, tires, tubes or cables, or any damage, failure or loss caused by improper assembly, maintenance, or storage or use of the Razor Carvr.

This Limited Warranty will be void if the product is ever

- used in a manner other than for recreation;
- modified in any way;
- rented.

The manufacturer is not liable for incidental or consequential loss or damage due directly or indirectly to the use of this product.

Razor does not offer an extended warranty. If you have purchased an extended warranty, it must be honored by the store at which it was purchased.

For your records, save your original sales receipt with this manual and write the serial number below.

Item Numbers:

**13010200**

**13010212**

**Need Help?** Visit our web site for replacement parts, product support, live chat and a list of authorized service centers at [www.razor.com](http://www.razor.com) or call toll-free at 866-467-2967 Monday - Friday 8:00 AM - 5:00 PM Pacific Time.

Patent Pending  
Printed in China for:  
Razor USA LLC  
PO Box 3610  
Cerritos, CA 90703  
Copyright © 2007 Razor USA, LLC. All rights reserved. RAZOR and the Razor Logo Design are among the registered trademarks of Razor USA LLC in the United States and/or select foreign countries. Carvr is a trademark of Razor USA LLC.